

For further information
www.suffolkonboard.com

or call
0845 606 6171

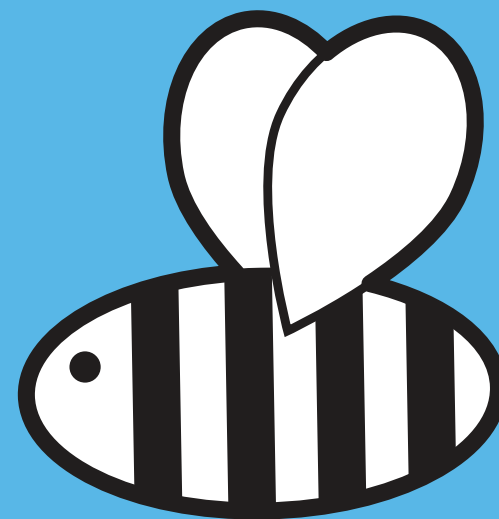


traveline
 public transport info
 0871 200 22 33
www.traveline.info



SHOTLEY BUZABOUT

GET ON BOARD!



SERVING THE SHOTLEY PENINSULA



suffolkonboard.com
 suffolk passenger transport

WHAT IS THE BUZABOUT SERVICE?

The aim of the Buzabout service is to give anyone living on the Shotley Peninsula who does not have access to transport the ability to travel around the area.

- Journey to local shops, visit family and friends and local businesses.
- Link your journey to and from Ipswich & Manningtree train stations.
- We are able to take people as far as Ipswich Station or Park & Ride at Copdock for onward travel.
- Fares are similar to standard bus fares
- Concessionary passes are accepted on the car service.
- Vehicles are fully accessible for people with mobility problems and/or using a wheelchair or scooter.

WHEN IS THE VEHICLE AVAILABLE?

The vehicle can transport up to 5 passengers and is available at the following times:

Monday -	07.00 - 19.00
Tuesday -	07.00 - 24.00
Wednesday -	07.00 - 24.00
Thursday -	07.00 - 24.00
Friday -	07.00 - 02.00
Saturday -	09.00 - 02.00
Sunday -	09.00 - 24.00

Book before 1pm for same evening journeys

BOOKING THE SERVICE

- Bookings are taken on a “first come, first served” basis.
- Bookings taken up to 7 days in advance.
- Priority, where possible, is given to early morning bookings for those wanting work/school/transport link journeys.
- Same day bookings are possible subject to availability.

DIAL A RIDE

This service operates from 09.30 - 16.30. To use the minibus you must be registered (no charge) for the service and fulfill the criteria i.e. mobility problems, difficulty accessing the large supermarkets due to lack of suitable transport. Registration is quick & easy – call the booking line and ask to register for the service, it can be done over the phone.

- Contact the booking line for details of the supermarket service which operates on alternate Mondays.
- Concessionary bus passes are not accepted on the minibus, cash or travel vouchers can be used as payment.

MINIBUS

The minibus is wheelchair accessible using a passenger lift. There is seating for 8 passengers or a maximum of 2 wheelchairs with fewer seated passengers.

All drivers are trained to the Minibus Driver Awareness Scheme (MiDAS) – a nationally recognised programme.

GROUP USE

The minibus is available for use by groups outside of service times except for the last Wednesday of each month when it is used by East Suffolk Association for the Blind.

The minibus is available for use, with driver, by community groups throughout the Peninsula. Please contact the booking line for details and charges.

If a group wishes to have their own driver then Suffolk A.C.R.E. is able to put the person through the MiDAS programme so that they can drive the minibus. There is a charge for the training but recouped through lower vehicle charges.

SERVING THE SHOTLEY PENINSULA

Tel: 0845 458 1920
OPENING TIMES: 09.00-16.00
MONDAY - FRIDAY