

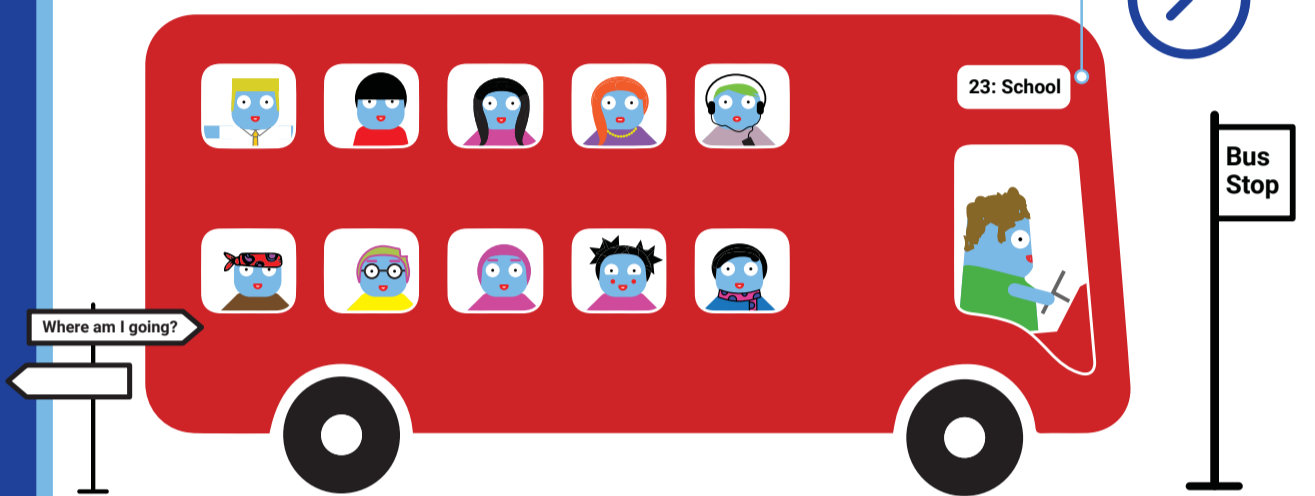


Getting organised for school

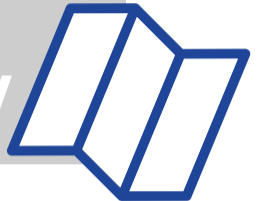
On the bus

Arrive  **10** minutes before your bus is due to depart

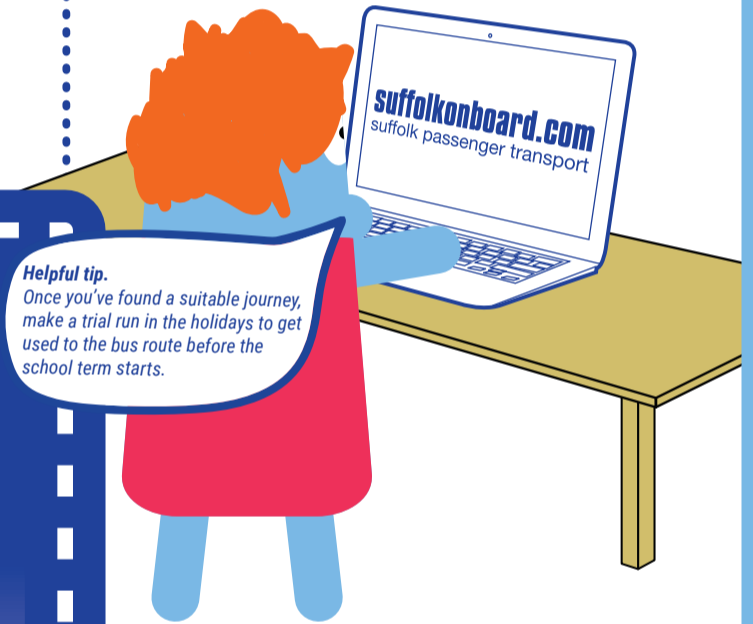
Route number and destination will be on the front of the bus



Planning a journey



Use the suffolkonboard.com journey planner to work out the best route to school. It will tell you how long the journey will take and may include more than one bus.



Fares



You can buy a ticket on the bus but it might be cheaper to get a bus pass from the bus company.

To find out how much tickets and fares cost, you will need to contact the bus company at www.suffolkonboard.com/operators

Bus stops



There are over 6,000 bus stops in Suffolk

Not all bus stops have a bus flag, shelter or timetable case. The best way to find your nearest bus stop is to search Google maps which will show all active bus stops.

Cycling

Always wear a helmet

Most schools have a bike shed. You will need to bring your own lock to make sure your bike is safe and secure.



CONNECTING COMMUNITIES

COMMUNITY TRANSPORT

Connecting Communities is a transport service provided by Suffolk County Council designed to help people travel around the county of Suffolk who might not have access to a regular bus service.



[BOOK MY JOURNEY ONLINE](#)

