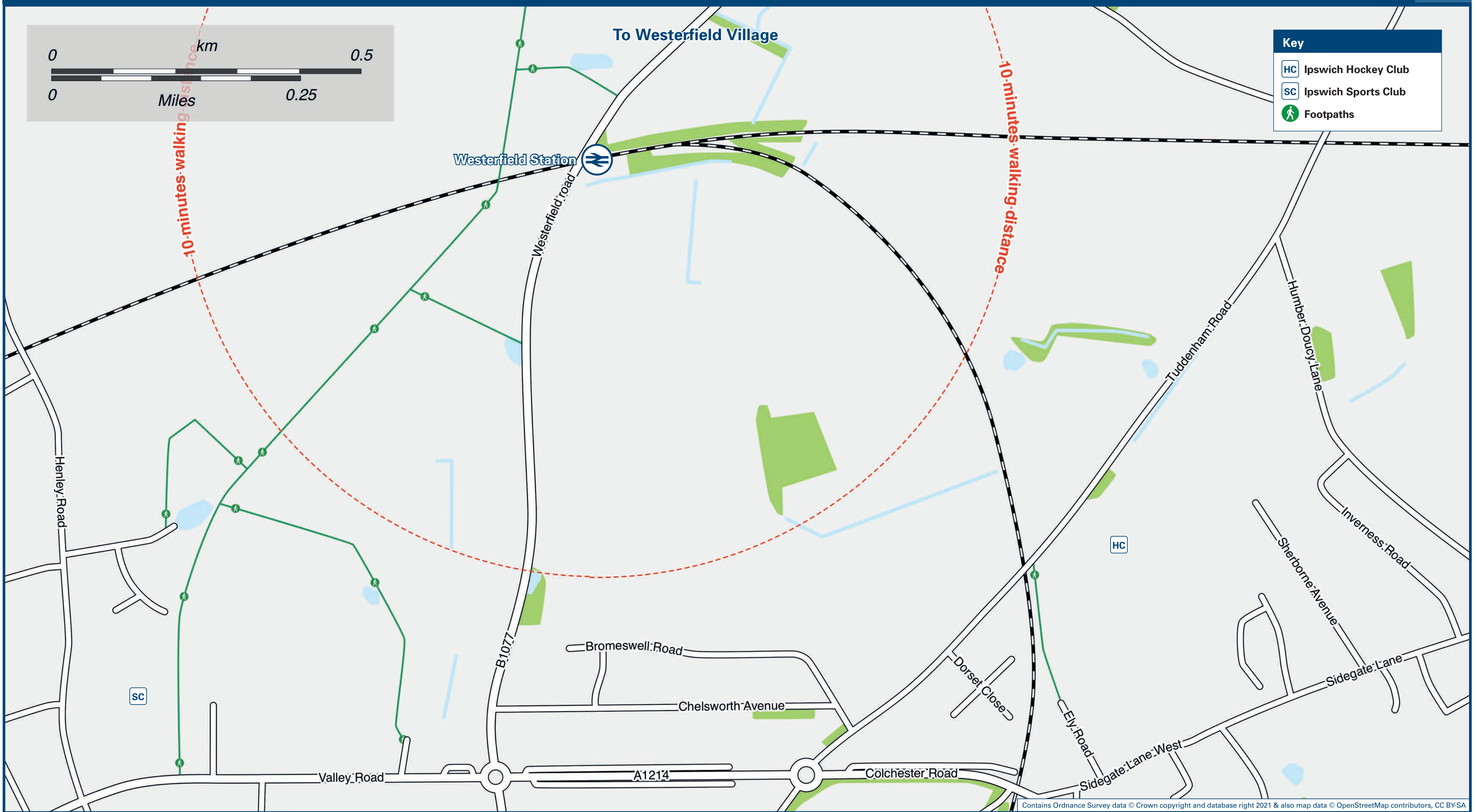




Westerfield Station

Onward Travel Information

Local area map



Buses



This station is not usually served during rail replacement - please use the help point telephones on the station for assistance.

Main destinations by bus

(Data correct at June 2022)

DESTINATION	BUS ROUTES	BUS STOP
Ashbocking	118*, 119	B
Ashfield cum Thorpe	119	B
Brandeston	118	B
Cretingham	118	B
Earl Soham	119	B
Framlingham	118, 119	B
Framsden	119	B
Helmingham	118,* 119	B
Ipswich Town Centre	118, 119	A
Kettleburgh	118	B
Otley Village & College	118	B
Saxtead Green	119	B
Swilland	118, 119*	B
Witnesham	118, 119	B

Notes

Bus routes 118 & 119 operate Mondays to Saturdays. No service on Sundays or Bank Holidays.

Direct trains operates to Ipswich from this Station

* Limited service to this destination.

Taxis

Westerfield Station has no taxi rank or cab office. Advance booking is essential, please consider using the following local operators: (Inclusion of this number doesn't represent any endorsement of the taxi firm)

Hawk Express Cabs
01473 222 222

Jet Cabs
01473 214 837

Cabs Smart
01473 252 525

Further information about all onward travel

Local Cycle Info www.suffolkonboard.com/cycles For more information about cycle routes.	National Cycle Info sustrans.org.uk Sustrans is the UK's leading sustainable transport charity.	Bus Times See timetable displays at bus stops. www.traveline.info 0871 200 22 33 call cost 12p per minute plus your phone company's access charge	NextBuses Find the bus times for your stop. Search for a bus stop by entering a postcode, street & town or a stop name & town.	PlusBus plusbus.info A discount priced 'bus pass' that you buy with your train ticket. It gives you unlimited bus travel around your chosen town, on participating buses.
---	---	--	--	---

National Rail Enquiries

Online nationalrail.co.uk	NRE App Free National Rail Enquiries app for iOS and Android	Social Media facebook.com/nationalrailenq @nationalrailenq	Alert Me You can sign up to Alert Me messages on the National Rail Enquiries website where you can receive train and platform notifications directly to your smart phone. nationalrail.co.uk/alertme	Contact Centre 03457 48 49 50 Calls cost no more than calls to geographic numbers (01 or 02) and may be recorded.	PlusBike nationalrail.co.uk/plusbike For more information.
---	--	--	---	--	--

greateranglia



National Rail
Britain's train companies working together

